

Chicken IgG Fluorescein
Catalog # ASR1098**Specification**

Chicken IgG Fluorescein - Product Information

| | |
|-----------------------|---|
| Description | CHICKEN IgG whole molecule Fluorescein conjugated |
| Conjugate | Fluorescein (FITC) |
| FP Value | 3.5 moles Fluorescein (FITC) per mole of Chicken IgG |
| Physical State | Lyophilized |
| Host Isotype | IgG |
| Buffer | 0.02 M Potassium Phosphate, 0.15 M Sodium Chloride, pH 7.2 |
| Species of Origin | Chicken |
| Reconstitution Volume | 1.0 mL |
| Reconstitution Buffer | Restore with deionized water (or equivalent) |
| Stabilizer | 10 mg/mL Bovine Serum Albumin (BSA) - Immunoglobulin and Protease free |
| Preservative | 0.01% (w/v) Sodium Azide |

Chicken IgG Fluorescein - Additional Information**Shipping Condition**

Ambient

Purity

This product was prepared from normal serum by delipidation, salt fractionation and ion change chromatography followed by extensive dialysis against the buffer stated above. Assay by immunoelectrophoresis resulted in a single precipitin arc against anti-Fluorescein, anti-Chicken IgG and anti-Chicken Serum.

Storage Condition

Store vial at 4° C prior to restoration. For extended storage aliquot contents and freeze at -20° C or below. Avoid cycles of freezing and thawing. Centrifuge product if not completely clear after standing at room temperature. This product is stable for several weeks at 4° C as an undiluted liquid. Dilute only prior to immediate use.

Precautions Note

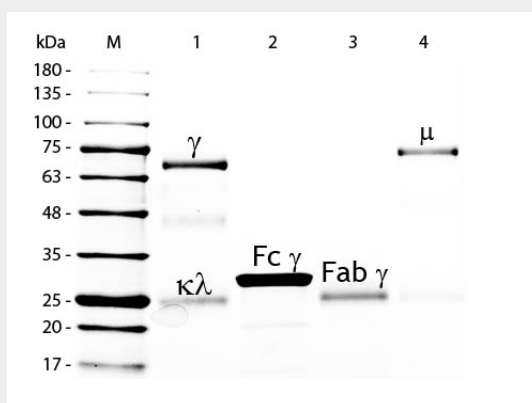
This product is for research use only and is not intended for therapeutic or diagnostic applications.

Chicken IgG Fluorescein - Protein Information**Chicken IgG Fluorescein - Protocols**

Provided below are standard protocols that you may find useful for product applications.

- [Western Blot](#)
- [Blocking Peptides](#)
- [Dot Blot](#)
- [Immunohistochemistry](#)
- [Immunofluorescence](#)
- [Immunoprecipitation](#)
- [Flow Cytometry](#)
- [Cell Culture](#)

Chicken IgG Fluorescein - Images



SDS-PAGE of Chicken IgG Whole Molecule Fluorescein Conjugated . Lane M: 5 μ L Opal Prestained Marker . Lane 1: Reduced Chicken IgG Whole Molecule Fluorescein Conjugated . Lane 2: Reduced Chicken IgG F(c) Fragment . Lane 3: Reduced Chicken IgG F(ab) Fragment . Lane 4: Reduced Chicken IgM Whole Molecule . Load: 1 μ g per lane. Predicted/Observed size: IgG at 72 and 25 kDa; F(c) at 25 kDa; F(ab) at 25 kDa; IgM at 75 kDa. Observed F(c) Fragment migrates slightly higher. Other bands: Chicken IgG heavy chain alternative splicing variant at approximately 40 kDa in Lane 1.

Chicken IgG Fluorescein - Background

This product is designed for immunofluorescence microscopy, fluorescence based plate assays (FLISA) and fluorescent western blotting. This product is also suitable for multiplex analysis, including multicolor imaging, utilizing various commercial platforms.